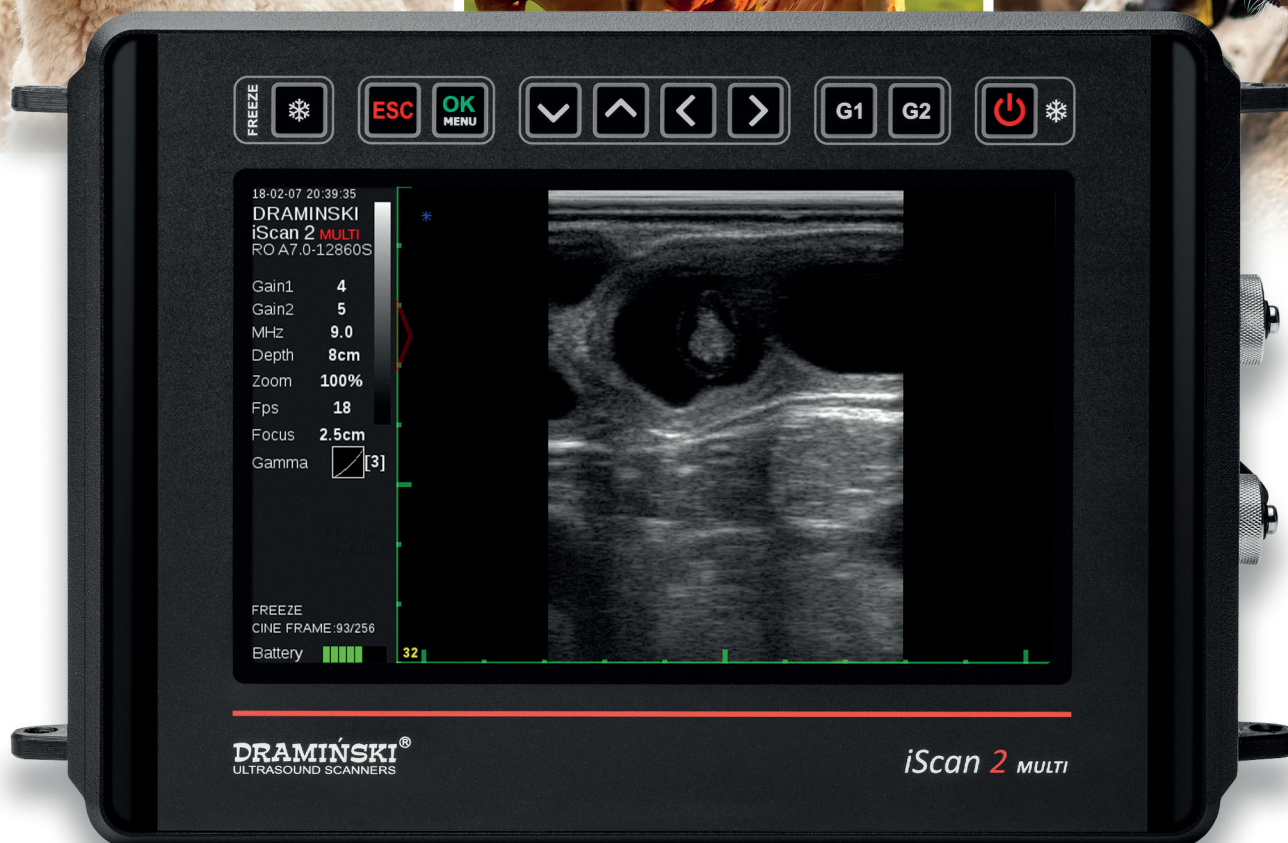


iScan 2 MULTI

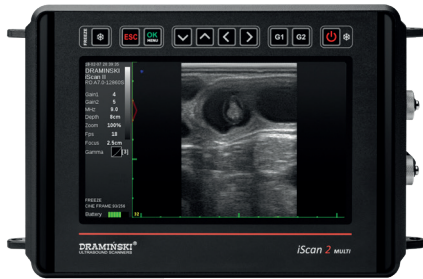
mobile veterinary ultrasound scanner



- For all large animal veterinarians
- Rugged and very light-weight
- Quick cleaning and disinfection
- Interchangeable probes

As versatile as you are

iScan 2 MULTI



Large, bright and easy to read display



Outstanding imaging quality



Interchangeable probes and battery

Types of probes working with iScan 2 MULTI:

ABDOMINAL:

- Convex 3.5 MHz R60
- Convex 5.0 MHz R50
- Linear 10.0 MHz L40
- Microconvex 6.5 MHz R15
- Microconvex 6.5 MHz R11

RECTAL:

- Linear Rectal 7.0 MHz L60
- Convex Rectal 5.0 MHz R60
- Microconvex Rectal 5.0 MHz R20

SPECIALIST:

- OPU 6.5 MHz R11
- Linear Backfat 3.7 MHz L150
- Linear Backfat 3.7 MHz L180
- Microconvex Endocavitar 6.5 MHz R10
- Linear Endocavitar 7.5 MHz L40



Technical data

Presets	Reproductive Tract, Pregnancy, Fetal sex, Late pregnancy, Custom preset to save
Used technologies	LuciD – image noise reduction and contrast enhancement
Measurement	Distance, Area, Volume, Grid, Age tables (Cow CRL, Cow BPD, DSG Horse, DO Horse, CRL Sheep, Lama BPD)
Image refreshing	Up to 28 frames / sec
Memory	200 Image, 200 Cine loops
Data export	Yes (to an external USB drive), WiFi
Display	7" LCD LED
Dimensions	256 x 165 x 69 mm
Device weight	1520 g body only, 2640 g body with battery and probe
Probes	Interchangeable electronic broadband
Working time on one battery	Up to 7 hours (continuous operation on a full charge)
Control	Splash-proof keyboard
Accessories	Screen sun shield, Goggles, Gel stand-off, Rectal probe extension for cattle or sheep



Greater comfort of working with OLED goggles



Rugged, light-weight, comfortable



DRAMIŃSKI S.A.
Wiktora Steffena 21, 11-036 Sząbruk, Poland
phone: + 48 89 675 26 00
e-mail: ultrasound@draminski.com • www.draminski.com

**WE DESIGN
WE MANUFACTURE
WE SALE
WE SERVICE**